

# GIFU BULLETIN

Vol. III No. II    Featuring News, Events, and Updates Around the Ken    November 2016

It's a great time to 🍁 fall 🍁 in love with our prefecture by admiring the natural beauty of the vibrant autumn leaves (紅葉). Check out some hot-spots in Gifu:

<http://gifujets.weebly.com/uploads/2/5/1/9/25199933/h26.xlsx>



## What's Catching?!

### Persona5 - by Josiah Wilson

If you aren't familiar with the series, that's okay as there isn't a continuing story between games, rather only thematic connections. Persona5 is set in a high school in Tokyo, mainly Shibuya. You gain the ability to enter the distorted psyches of power-mad individuals and, with the help of a mysterious anthropomorphic cat, you carry off large-scale heists in which you break into their mind-palaces and steal their corrupted desires. You and your high school friends form a thief guild called the 心の怪盗団 - localized as The Phantom Thieves of Hearts. Yes, the premise is pretty out there, but it's a heck of a lot of fun.



Now, while the method in which you deal with these situations is quite farfetched, the people whose hearts you'll be robbing are all too real. Persona 5 deals with some heavy themes; a lot of issues from modern-day Japan. I don't want to go too deep into spoilers, but suffice it to say that you will likely feel quite uncomfortable by some of the things that go down in this game, and you may well have been witness to some of it in your work here.



The game was released last month in Japan, but it won't be out until February in the US and Europe, so the only way you can play it right now is in Japanese. The game pulls no punches with kanji usage - there's not a lick of furigana in the game - and while there is quite a lot of voice acting it's not 100%. Furthermore, people speak with a wide variety of accents and speaking styles, from very slangy to exceedingly formal. If you're a mid to high level learner (~N2+), it'll probably prove to be excellent language practice. If you're still working towards N4 or N3, it might be a bit of a rough time.

Japanese Phrase of the Month	一心不乱 <i>Isshinfuran</i> To do something wholeheartedly. The literal translation is "one heart without disturbance"
------------------------------	---

# GIFU BULLETIN

Vol. III No. II    Featuring News, Events, and Updates Around the Ken    November 2016



## November Public Holidays

\*information from <http://publicholidays.jp/>

November 3<sup>rd</sup>

**Culture Day**

文化の日

Beginning in 1868 to celebrate the birthday of the reigning Emperor Meiji. After he died, in 1912 the holiday was discontinued until 1927. In 1948, it was changed to Culture Day, to celebrate cultural, artistic and academic pursuits.

November 23<sup>rd</sup>

**Labor Thanksgiving Day**

勤労感謝の日

Originating from a harvest festival, Shinjo-sai, which texts date back as far as the 6<sup>th</sup> Century BCE. The modern public day holiday began in 1948, marking the Japanese Constitutional changes to protect human rights and labor rights. The day is used to celebrate labor, production, and to give thanks.



## November Events

\*compiled by your RPA social team

### November 3<sup>rd</sup> – 23<sup>rd</sup> – Nakasendo Festival



What: An Edo-period lodging town on the Nakasendo Trail (one of only two Edo-period trails that connected modern-day Tokyo with Kyoto) will be showcasing rows of romantic lantern art along its streets throughout November, as well as a beautiful fall foliage light up event.

When: After sundown

Where: Magome-juku/Shimada Park (馬籠宿・島田公園)

### November 3<sup>rd</sup> – Casual English Party

What: A casual English party organized by one of the local bars where everyone can just come together and have a good time chatting to locals and people from around the world!

Entry is free for foreigners and alcoholic beverages are available starting from only ¥400!

When: 7:30pm – 9:30pm

Where: 3-Chome, Honmachi, Takayama-shi, Hida region



## November 5<sup>th</sup> – AJET Nakasendo Trail Walk

**What:** Join AJET for a walk in the great outdoors as they hike the Nakasendo Trail. It's a historical trail that weaves throughout Edo period lodging towns and historical sites. The fall foliage will also be out to dazzle you along the way. This event is completely free!

**When:** 10:50am – 3:10pm

**Where:** Buses leaves from Mitake station or Mizunami city hall/station. Check Facebook for details.



## November 19<sup>th</sup> – AJET Thanksgiving



**What:** Love good food and great company? Then you should join AJET for their annual Thanksgiving dinner with their lovely host, Chisako! There will be real turkey, stuffing, gravy and lots more to enjoy. All you have to do it bring ¥500 and a dish to share!

**When:** 4:30 pm

**Where:** Seki-shi

\*RSVP on Facebook

## November 23<sup>rd</sup> – Oyada Hinkoko Festival

**What:** The Oyada Maple Valley is famous for its top-quality autumn leaves viewing, with bright red maples. This festival features a unique puppet show, where the characters act out the tale of Susano-o and the Dragon's Tail, as well as Inada-Hime's Battle. Come enjoy the beautiful leaves and this unique festival.

**When:** All day

**Where:** Oyada Shrine, Mino-shi



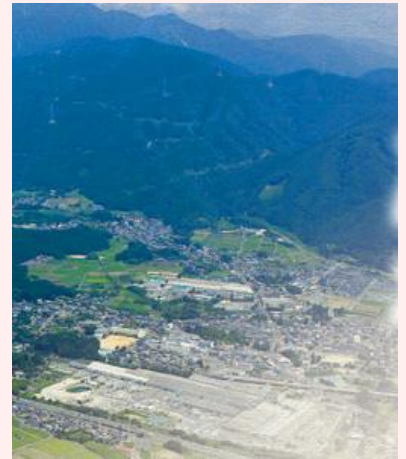
# GIFU BULLETIN

Vol. III No. II      Featuring News, Events, and Updates Around the Ken      November 2016

## Regional Spotlight: Seino

### The Battle of Sekigahara Festival

Recently, on October 15 and 16, 2016, Sekigahara Town in western Seino held their annual Battle of Sekigahara Festival (関ヶ原合戦祭り)! The weather was perfect, with warm sunshine beaming through the mountain valley and a complete contrast to the humid mist that loomed the same area in 1600. The Festival, which commemorated the 516<sup>th</sup> anniversary of Japan's largest civil war, featured exciting dances and stories with all sorts of performers, from the town's kindergarten classes to celebrity Koji Yamamoto ("Ishida Mitsunari" from NHK's drama, Sanada Maru 真田丸).



This year food trucks lined the main streets leading out from Sekigahara station, and visitors from all over the world flocked to see local elementary students wear traditional samurai armor, called kacchu, and tell the history of their town's battle. Sekigahara has been growing immensely with its primary goals of globalizing and fostering relationships with international battlefields, as well as spreading its historic battle traditions throughout Japan. Last month, on September 5, 2016, representatives from Sekigahara Town, including the Mayor Yasuyo Nishiwaki, went to Gettysburg, Pennsylvania, USA and officially signed a Sister Cities Agreement, tying the two civil war sites together in past, present, and future.

If you happened to miss the Battle Festival this year, definitely be sure to check it out next



time! From fighting over the Eastern Japan versus Western Japan flavors of ramen, to cheering for your favorite soldiers on horses throughout the town, this event is one that is quickly growing in Japan every year, and you don't want to be late to the battlefield and action!

### What did you think?

What would you like to see in future issues?

Send us an email at [gifupas@gmail.com](mailto:gifupas@gmail.com)



See you next time!